



MONTEREY BAY NEWS

www.montereybayiris.org

July, 2008

Next meeting Saturday, 19, 2007
Harvey West Park 11 A.M.
Auction
Potluck
Pick up Door Prize iris

Newsletter of the Monterey Bay Iris Society

ANNUAL JULY PICNIC!



Joe holds great iris to bid on at the July picnic.

2008 Calendar

Annual July Picnic
Saturday, July 19.... 11:00 A.M.–3:00 P.M.
Harvey West Park
Potluck and Auction

Annual Sale

Dig..... Joe's Ranch
Thursday, July 31st 9 A.M.–1:00 P.M.

Sale.... Deer Park Shopping Center
Saturday, August 2.... 9 A.M.–12:00 P.M.

Regular Meeting

Friday, August 15..... 7:30 P.M.

Rebloomers
Refreshments
Volunteers Needed

Regular Meeting

Friday, September 19 7:30 P.M.

Tall Beardless
Refreshments
Volunteers Needed

Regular Meeting

Friday, October 17..... 7:30 P.M.

PCIs
Refreshments
Volunteers Needed

Isis!!!

Our booth at the The Smart Gardening Fair has many irises remaining to be sold...it would be best if these irises do not wait until the Monterey Bay Iris Society picnic on July 19. Call Brenda Wood 818-4515 to buy some.

Newsletter Deadline!!!

Please get submissions in by Friday August 1st. Please do not turn material in late!

From The Prez

OUR BIG ACTIVITY FOR JUNE was the Smart Gardening Faire, where the MBIS held an iris sale and, like most other garden societies in the Monterey Bay area, presented an educational booth to offer information about growing irises and answer gardeners' questions.

I'm pleased to recognize our members who devoted part of their day and/or donated irises for this gift to the gardening community and the MBIS. Thanks to Jesse Bush, Jim & Irene Cummins, Larissa Daniel, Ruth Dotson, Charley Kearns, Ann Pike, Diane Sampson, Adele Tuiolosega (Rosa's Sister), Pat Wisdom, and Brenda Wood

(Your prez and vice-prez didn't help, because they were co-chairing the Faire. We did, however, spring for a canopy when the wildfires closed the highway and upset the Society's canopy plan. We simply could not let our good friends be unprotected during that day's 105° weather!)

The heat of the day reduced the numbers of visitors to the Faire, but the MBIS still recorded \$620 in sales, which made the day a success. Because of the generosity of our members, a good selection of rhizomes remained after the sale. Diane Sampson has announced some of the fine varieties that remained after the sale, and a good selection will still be available during our Annual Picnic, Potluck & Auction in Harvey West Park from 11:00 to 3:00 on July 19th.

Mark your calendar and come to the picnic! ❁❁ Tom



CULTURE TIPS

THE SUMMER MONTHS are the time to dig and replant irises. There is no need to worry about bearded irises that out of the ground. Simply store them with their all their leaves in an upright position in a cool shady place. Cut the leaves back when you're ready to plant them.

If replanting in the same location, amend your soil with humus like compost, well rotted manure, and if your soil is heavy even some sand. A nice handful of bonemeal in each hole will bring benefits later.

On new stock that you get elsewhere and even your own, it is wise to soak in a bleach solution for 10–15 minutes. The rate is 1 part bleach to 9 parts water. When you remove them from the bleach solution, rinse in clean water, and dry them completely before replanting. The drying is very important or you are likely to get deformed growth. If available a dunking in a Terriclor solution is also wise, then dry them.

Label as you plant and always make a map of your planting. The map is a fall-back in case you misplace labels or just don't like labels in your garden. 🌱🌱 *Joe*



Iris Dig for August Sale

We will be digging iris for the sale at Joe's ranch on Thursday, July 31st from 9:30 A.M. until we are finished (about noon or 1 P.M.). **All members are encouraged to attend!** Take Freedom Blvd and make a left Corralitos Rd (by Aladdin's Nursery). Pass the school on the left side of the road, then slow down and after 2 houses you will see the field of iris behind the row of roses. Park on the shoulder of the road.

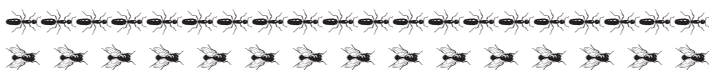
Please bring permanent markers, scissors, shovels, a folding chair, folding table if you have one, comfortable shoes, a sun hat, something to drink, and **many, big!!** cardboard boxes! Also **bring the irises you are donating for the sale.**

Generous donations of rhizomes from our members are what makes this sale a success. We need your healthy, well grown, names increases. If you don't have time to write their name, you may bring the clumps in paper bags with the name written on the bag. They can be cut and named at the ranch.

If you cannot come to the ranch, please send them with another member or bring them early to the the sale named. **Prizes**—we will have a raffle, everyone will go home with a recent introduction!

BBQ Lunch is a good possibility! Domingo, crank up the fire and toss on the burgers!

We will also need reliable volunteers with trucks/vans/pickups to take the irises, keep them until Saturday and bring them to the sale.



Board of Directors 2008

President

Tom Karwin tom@karwin.com 426-5981

Past President

Diane Sampson debsampson@baymoon.com 728-1339

Vice President

Sheryl McEwen sherylmcewan@pacbell.net 212-5861

Treasurer/ Show Chair

Charley Kearns kcf@gte.net 408-353-4567

Secretary

Jim Cummins jcummins@pacbell.net 438-1369

Hospitality

Irene Cummins jcummins@pacbell.net 438-1369

Librarian

Brenda Wood woodbrenda@aol.com 724-5415

Newsletter Editor

Joe Ghio ghiobayview@surfnetUSA.com 423-3656

Webmaster

Ann Pike baynews@baymoon.com 426-8855

1 Year Board

Irene Cummins jcummins@pacbell.net 438-1369

Carolyn Craft theladygardens@aol.com 408-266-0945

Diane Harrison dlauer@illudere.com 464-1415

2 Year Board

Larissa Daniel larissa_paniza@hotmail.com 724-9162

Marie Devery Deveryinc@aol.com 722-1886

Brenda Wood woodbrenda@aol.com 724-5415



MBIS Annual Iris Sale

When

Saturday, August 2th, 2007

Where

Deer Park Shopping Center, courtyard in front of the Red Apple Café

Set up Time

7:30 a.m. We need help for the set up. Helpers get first choice of selections.

We hope you will help us sell during the morning. If you did not take the irises you are donating to Joe's ranch on Thursday, Please cut the fans to about 12", cut roots to 5" or 6", **print the name clearly on the middle leaf with a permanent marker**, and write the color if possible. If you bring varieties other than TBs, please mark IB (intermediate), BB (border), SDB, (standard dwarf), DDB (miniature dwarf, MTB (miniature tall).

Sale Time

9:– to noon (or sell out).

If you cannot get to Deer Park early, please drop your donation iris at the home of a member who will be there for set up.

Please bring brown grocery bags if you have any, comfortable shoes, and lots of friends to buy our iris.



Diane and Charley help customers pick just the right iris at the Smart Garden Faire

Iris for Picnic

It is time to dig increase from the iris you won as door prizes last year, and bring them to the July picnic. If you are a new member, these irises should be available at the picnic so be sure to be there. Members share their best irises at this picnic. Try to bring these the most recent past Door Prize Iris. Absolute Treasure, Tasco, Sky blue self; All About Spring, F.Kerr, Lavender, gold halos on all petals; All Gussed Up, Burseen, White; brushed blue edge on falls; American Master, F.Kerr, S. lemon; F. white w/blue rim; Aristocracy, Keppel, Dark orchid toned violet; At First Blush, F.Kerr, Pink and white blend; Athens, T.Johnson, Blue luminata; Bamboo Shadows, Keppel, Green-gold self; Banjo Girl, Davis, Magenta, silver in center of falls; Bon Appetit, Aitken, S. pink; F. lavender; Bubbling Waves, J.Ghio, Bubbled ruffled mid blue; Candy Club, Painter, Red violet w/white spray pattern in Falls; Chinook Arch, T.Johnson, Yellow and peach blend; Comic Opera, G.Sutton, Unusual blend of colors: rose, pansy, violet, & pink; Crazy, D.Spoon, Magenta, fuzzy magenta horns; Cry Me a River, Burseen, S. tan; F. purple; purple spoons; Dream Ticket, Lauer, S. pink; F. cream, violet edging; Earth Girl, D.Spoon, Mauve plicata w/fuzzy white horns; Equalizer, R. Ernst, Soft light blue; Fabulous One, Nicodemus, Neglecta; S. light blue; F. velvety deep blue; Fit for a King, Schreiner, Neglecta: S. lavender; F. rich purple; ruffled; Fortunate Sun, Schreiner, Red self; bluish beards; Gilt Trip, J.Ghio, S. light wine; F. blackish wine; Glamour Pants, Blyth, S. apricot; F. burgundy, apricot edge; High Chaparral, Schreiner, S. yellow; F. tan; Convention winner; Honeycomb, Lauer, S. peach; F. white, orange band; House Warming, T.Johnson, S. white; F. light lavender blue; Imagery, T.Johnson, Soft pearly lavender self; In Style, T.Johnson, White with yellow rim on falls; In the Spotlight, M. Sutton, S. white veined gold; F. white w/gold band; Inside Job, J.Ghio, Blue luminata; Italian Velvet, Keppel, S. violet;

F. black maroon; wide yellow beard; Jazz Band, Keppel, S. orange; F. orange w/wide tan band; Kathy Chilton, F.Kerr, S. gold; F. burgundy black; Kisses Like Wine, F.Kerr, Amoena w/burgundy falls and white sunburst; Magic Happens, J.Ghio, White w/blue lines overall the falls; Night Moves, Lauer, S. violet; F. plum, white shoulder markings, red beards; Novel Idea, J.Ghio, Pink w/violet lines & speckles; Orion's Gate, G.Spoon, S. yellow; F. lavender, gold shoulders; Over the Edge, M. Sutton, S. pink; F. dark violet maroon; Overboard, L.Miller, Blue white w/falls brushed blue plum; Peggy Sue, Lauer, Pink rebloomer; Phoebe's Frolic, R. Ernst, Deep Ring Around Rosie type; Please Come Home, F.Kerr, Near black w/bronze beards; Plum Duck, Kasperek, Medium purple SPEC-X; Prime Power, Tasco, Orange self; Quail Ale, Kasperek, Light yellow w/red purple speckles; Rare Innocence, M. Sutton, White self w/white beard flounces; Resonance, J.Ghio, Silvery lavender-blue; Rhinelander, Schreiner, Mauve grape self; River Romance, Painter, Mid to light blue self; Royal Quackers, Kasperek, Blue purple neglecta, IB; Royal Togs, L.Miller, S. orchid plum; F. blackish plum; red beards; Shadow of Night, Tasco, Purple with black highlights; Shanti, Williamson, Amethyst lilac bitone; Signal Red, D.Spoon, Mauve pink with huge read beards; Silent Screen Star, J.Ghio, Creamy blend of yellow, pink & tan; Silver Streak, M. Sutton, Rose violet with white streaks; Spirits Rising, L.Miller, Pink with upturned pink horned beards; Spun Candy, D.Spoon, Pink w/silver streaks at hafts; Standing Alone, L.Miller, Rosy red (Lady Friend color); Star Challenger, D.Spoon, Ruffled purple rebloomed; Tropical Cooler, Burseen, S. white; F. white, blue stripes; Tropical Evening, Aitken, S. lavender; F. black; Under the Tuscan Sun, F.Kerr, Honey and pink lavender blend; Uppermost Edge, F.Kerr, White w/blue washed edges on falls; Vigilant, J.Ghio, Neglecta w/black falls.



Picnic, Raffle and Auction

Area B Harvey West Park, Santa Cruz

July 19th, 2008, 11:00 a. m.

Area B is in the center of the picnic area under the big oak tree.



Door Prizes

This is the time to pick up the door prize irises you won during the year. If you can't make the picnic, have someone pick them up for you or they will be auctioned off.

Directions to Park

Coming toward Santa Cruz on Hwy 17 or Hwy 1, follow the signs to Half Moon Bay. At the first light turn northwest on Hwy 9 towards Felton. Turn left at the first possible turn, left again at the stop sign on Limekiln Ln.; it turns into Coral St.; follow it to the end. Turn right on Evergreen and go **straight ahead** to the park. Look for the picnic tables in the Buckeye area, the first area when you enter the park. Look for the MBIS sign on the left of the road.

Food and Beverages

Bring a dish to share with 10–20 other (salad, veggies, main dish or dessert) and what ever you would like to drink.

What Else to Bring

Your own plate, utensils, and glass. A table cloth if you want to cover the table. Paper bags for your new irises. A hat if you like, chair to be more comfortable, **money** or checkbook to pay for incredible iris bargains, and last, but not least bring iris! Bring an increase of last year's door prizes and other newer varieties. **You don't need to cut the fans.** Please write the names with a **permanent marker** on the **lower part** of the **middle leaf**.



Joseph J. Ghio, Editor
1201 Bay Street
Santa Cruz, CA 95060

